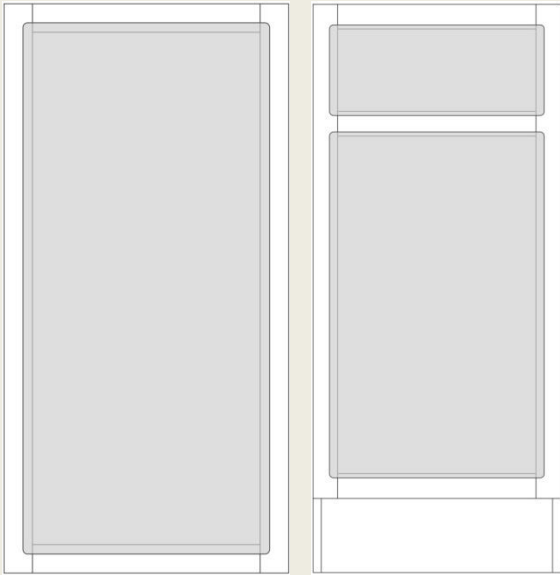
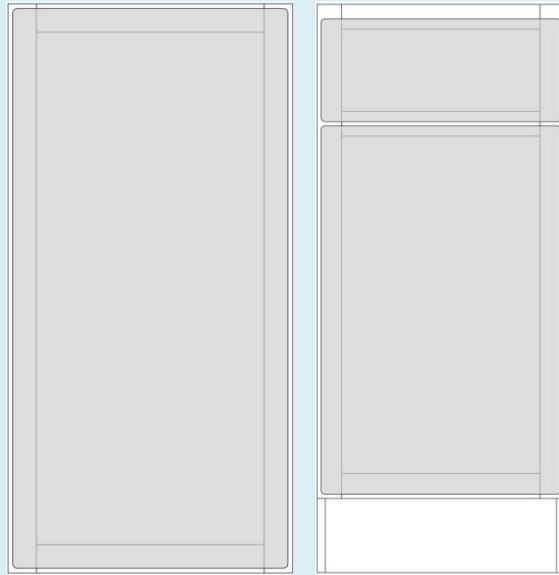


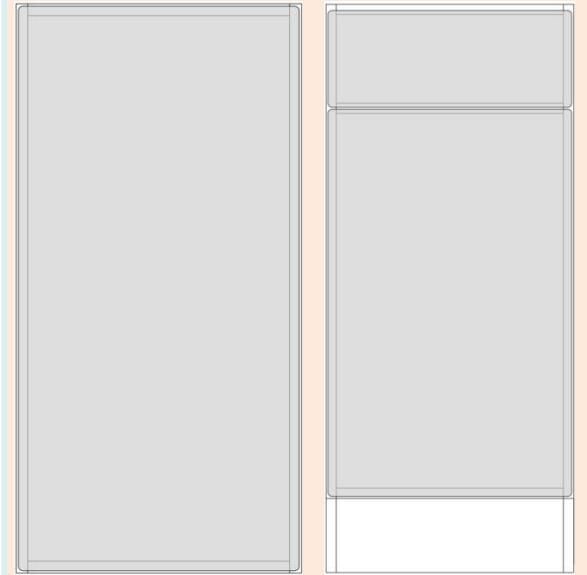
# Applications



1/2" Overlay



1 1/4" Overlay

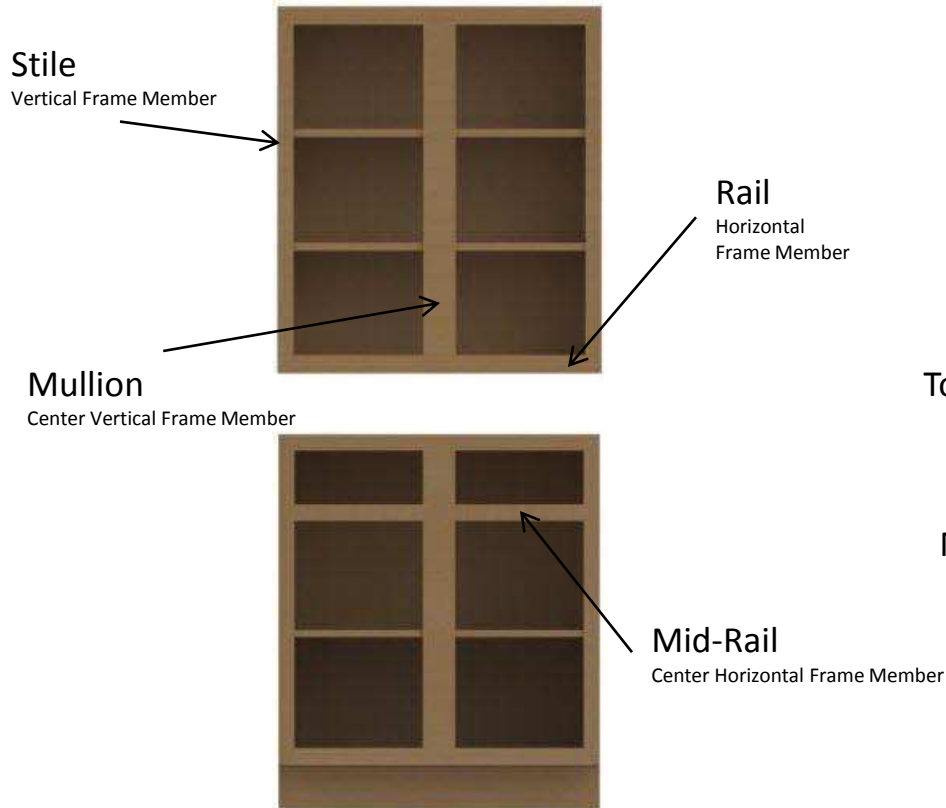


Frameless

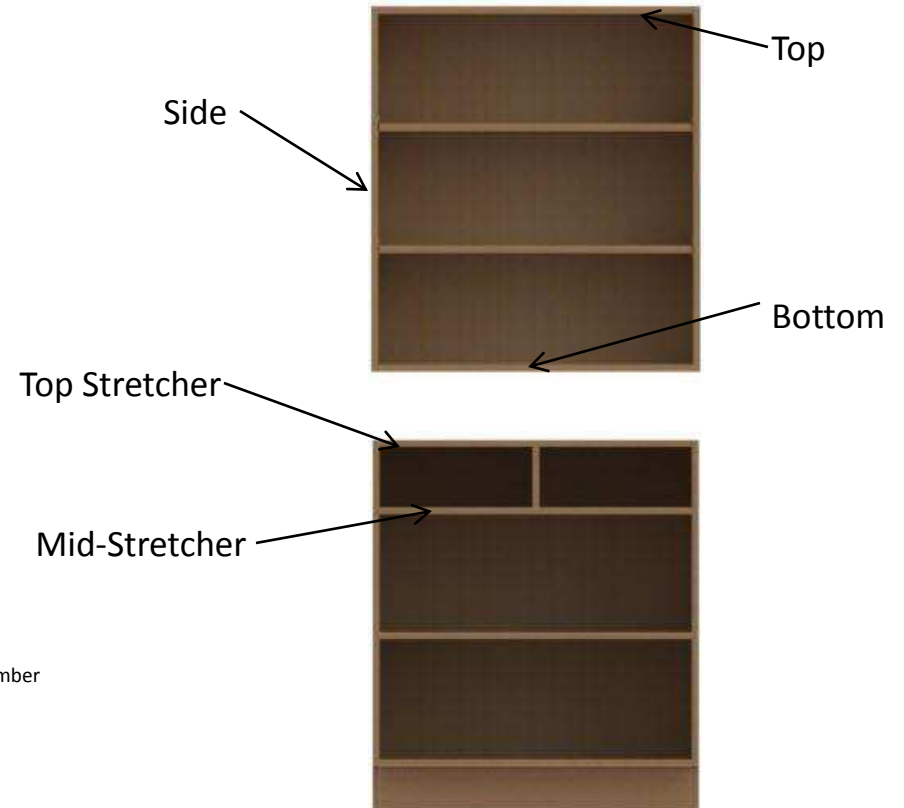
	<b>½ Overlay</b>	<b>1 ¼ Full Overlay</b>	<b>Frameless</b>
<b>Primary Reason for Application</b>	Its Simple	Hides Current Frame	If it's a frameless cabinet you have to use a frameless application!
<b>When to Use Each Application</b>	<ol style="list-style-type: none"> <li>1. Frame matches an existing foil and frames are in good condition</li> <li>2. There is an available door color foil that compliments the existing frame color (i.e. using a white foil with a honey color frame)</li> </ol>	<ol style="list-style-type: none"> <li>1. When the customer wants to hide the current frame with a better looking door color.</li> <li>2. When replacing a full overlay door</li> </ol>	
<b>Biggest Problems</b>	Customer may not like new looking foil on an old looking frame	Full overlay door may not work in corners or near molding	Measuring can be tedious

# Terms for Applications

## Framed Cabinets



## Frameless Cabinets



# Framed Cabinet Hinges



1 1/4" Overlay Hinge Plate



1/2" Overlay Hinge Plate

# Frameless Cabinet Hinges

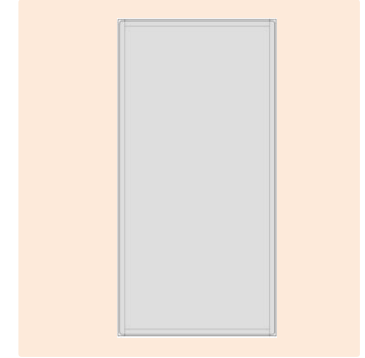
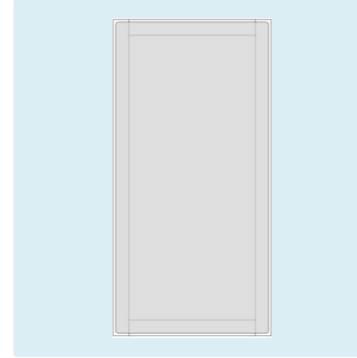
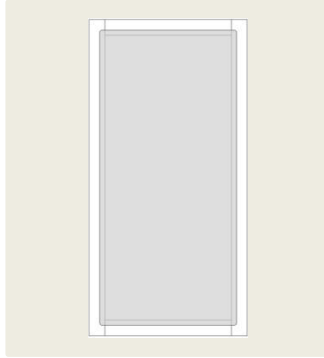


Hinge



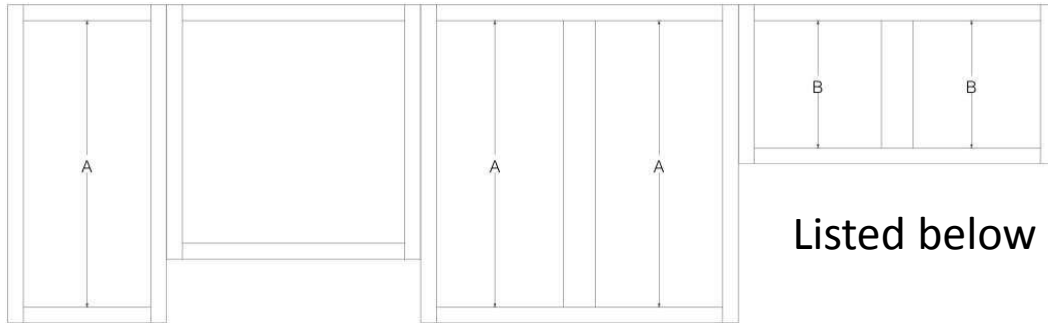
Hinge Plate

# Typical Dimensions



Typical		1/2" Overlay	1 1/4" Overlay	Frameless
<b>Wall</b>				
	Door Width	1" larger than opening width	2 1/2" larger than opening width	1/8" less in width & height
	Door Height	1" larger than opening height	2 1/2" larger than opening height	1/8" less in width & height
<b>Base</b>				
	Drawer Head Width	1" larger than opening width	2 1/2" larger than opening width	1/8" less in width & height
	Drawer Head Height	1/2" larger than opening height	1 1/4" larger than opening height	1/8" less in width & height
	Door Width	1" larger than opening width	2 1/2" larger than opening width	1/8" less in width & height
	Door Height	1/2" larger than opening height	1 7/8" larger than opening height	1/8" less in width & height

## Typical Vertical Opening Patterns



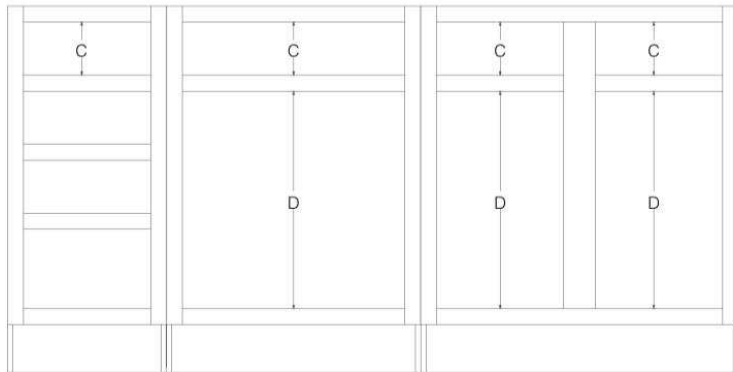
Listed below typically have the same opening height

A – Wall cabinets with the same height

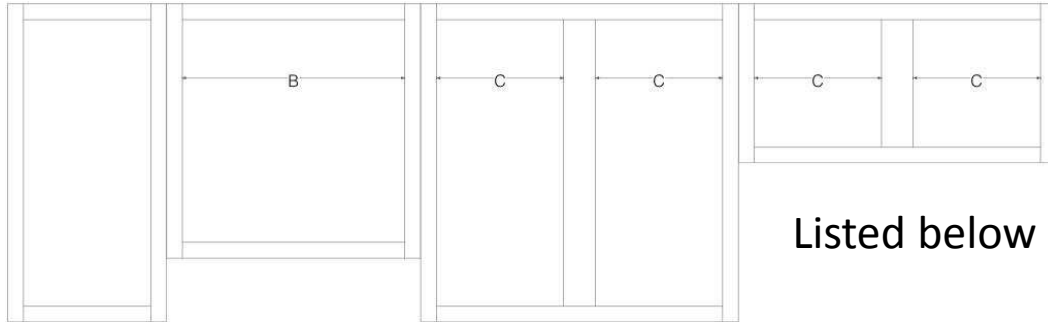
B – Sections within the same cabinet

C – Openings heights of top drawers/sink false fronts

D – Openings heights of all base doors



## Typical Horizontal Opening Patterns



Listed below typically have the same opening width

A – Drawer base openings

B – Vertically aligned cabinets with the same width

C – Wall cabinets that have the same width

D – Base cabinet drawer/door sections

